

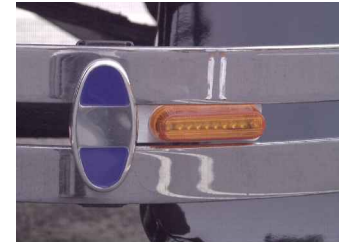
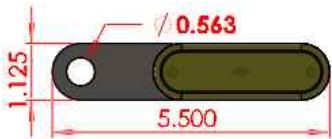
Logo Lites™ Type 23 Signal Lights



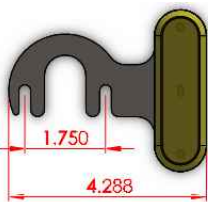
Type 23 Signal Lights work with Logo Lites **Turn Signal Kit, Brake & Run,** and **LED Extender.** Connect to Logo Lites controller harness by stripping approximately ¼" of insulation off the wire and crimping on a male bullet connector. Consider carefully if you should crimp the connector onto the wire before you install the bracket, or after you install the bracket, for the easiest installation on your particular vehicle.

DO NOT CONNECT TO 6V OR 12V BATTERY! DOING SO CAN DESTROY THE LIGHT ASSEMBLY!

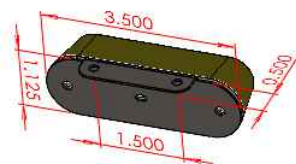
Bumper Bracket Installation – This bracket is designed for Model A Ford type of two piece bumpers. Amber signals alone go toward the outside of the car. Red signals go outside and amber toward the center when used together. Use a wrench to remove bumper clamp nut and washer from bumper clamp stud. On rear bumpers, loosen bumper bar bolt that goes through the bumper bracket so you can swing bumper away from fender. Hold bumper clamp backing plate, bumper, and clamp together as an assembly. Pull assembly away from bumper bracket so stud is out of bracket hole. Side signal light over clamp stud. Put assembly back into bumper bracket hole, sandwiching signal light between bracket and bumper assembly. Reassemble bumper clamp and tighten firmly.



Bucket Bracket Installation – Bucket Brackets are designed to fit Model A Ford and other vehicles using the "Duolamp" type tail lights. The amber signal usually mounts between the body and the light bucket on cars and pickups. Loosen the tail light screws just enough to slide the bracket behind the tail light and down onto the mounting screws. Tighten the screws firmly. The Logo Lites wire should follow the same path as the tail lamp wires and inside their protective covering, if available.



Universal Bracket Installation – The flanged universal bracket mounts the signal light in a virtually endless number of ways. Lights can be mounted vertically or horizontally, to the left or right, or above or below the body. It can mount to an intermediate bracket, or directly to sheet metal, fiberglass, or even wood body parts. The mounting holes accept #8 screws. NOTE: the bracket *must* be grounded to the chassis for the light to work, which may require extra wiring on non-conductive brackets or surfaces.



Pi Bracket Installation – Pi Brackets (named for the Greek letter Pi π) allows the signal light to mount in many different ways. Lights can be mounted vertically or horizontally, to the left or right, or above or below the body or bumpers. The bracket is flat, but can be bent or trimmed if necessary. Originally designed to be sandwiched between two brackets and around a clamping bolt, the Pi Bracket has enough metal to be easily customized. However it still maintains the Logo Lites minimalist approach to design so people see the signal instead of the bracket. NOTE: the bracket *must* be grounded to the chassis for the light to work.

